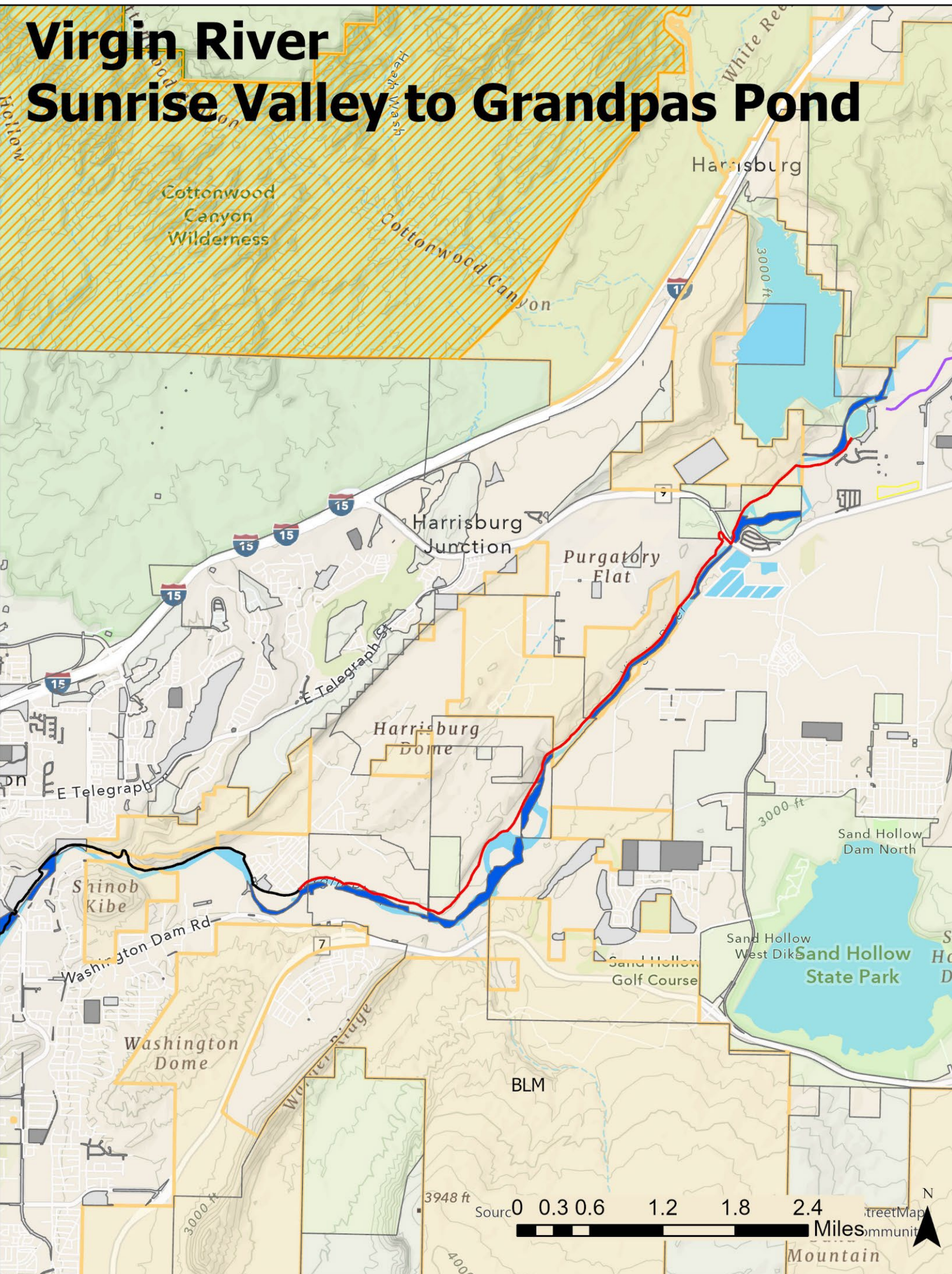


Extend the SR18 trail system to connect Snow Canyon State Park to Veyo.

Estimated cost: \$198,000

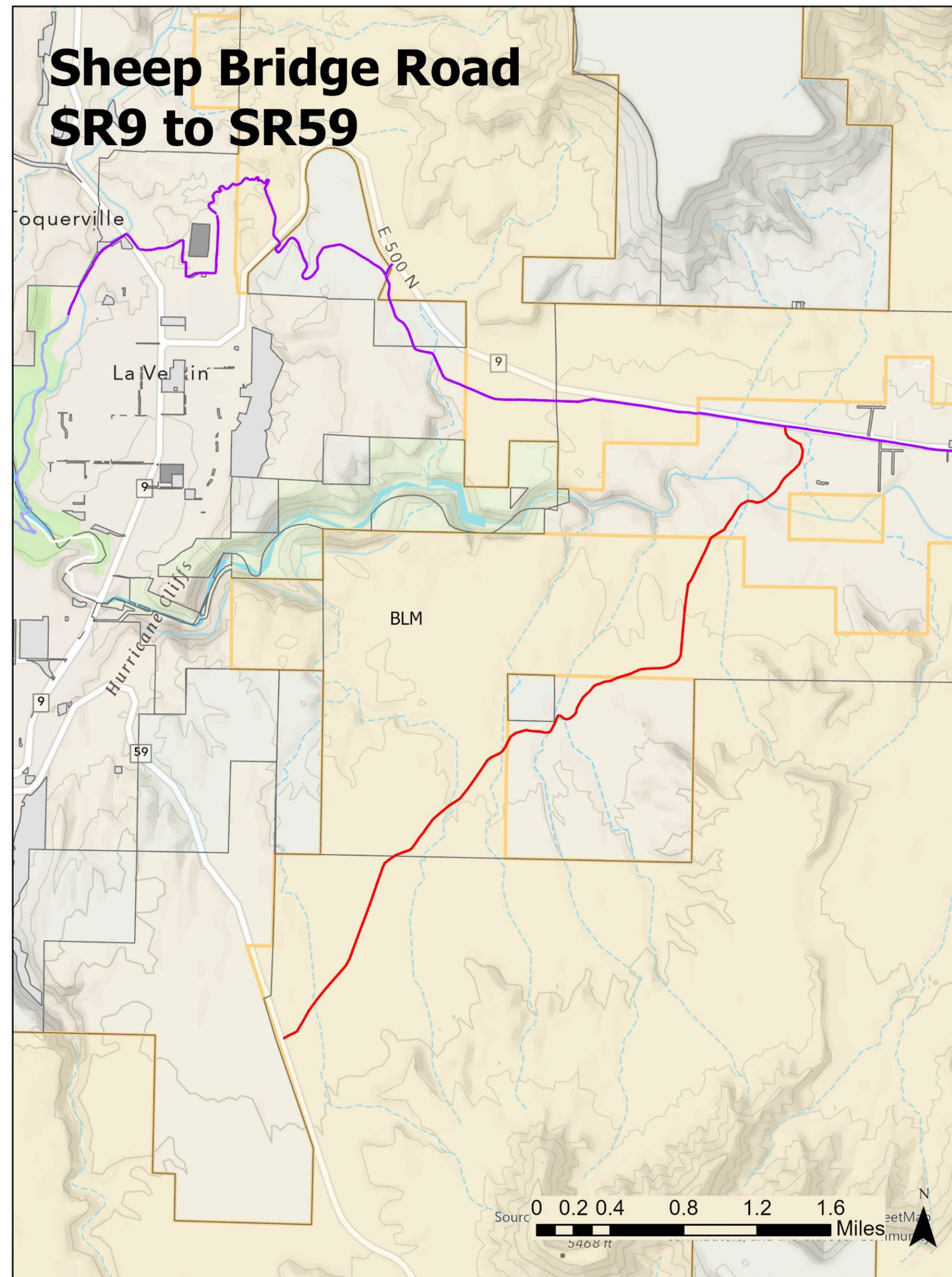
SR18 is a critical transportation corridor with gaps in safe, alternative options for active transportation. Currently a separated, paved trail connects the southern end of the corridor within St. George and some of the corridor further north from Veyo to Central. These trail segments are well used and community residents have expressed desires for better trail connectivity within this corridor. We propose to conduct a feasibility study and concept development of a separated, paved trail to connect from Snow Canyon, where the current southern portion of the trail ends, to Veyo. This also brings the trail through the Dammeron Valley community. This would add approximately 9 miles of trail and fill the trail gap along SR18.



Virgin River North Trail from Washington City to Grandpa's Pond in Hurricane City

Estimated cost: \$140,000

The existing Virgin River North trail system ends at the Washington City boundary near Sunrise Valley Park. We wish to begin study of trail that would extend from Washington City, along the Virgin River, to Grandpa's Pond; near Quail Creek Reservoir, in Hurricane City. A distance of approximately 7 miles. This route crosses a piece of County Unincorporated area and would provide a vital connection between Washington city and planned trail in Hurricane City. It is also a crucial gap that would fill, along with currently planned trail, a regional trail route between St. George and Zion National Park.



Sheep Bridge Road

Estimated cost: \$50,000

Begin preliminary planning for a separated, paved trail along Sheep Bridge Rd. Sheep Bridge Rd is an approximately 5-mile-long connection between SR9 in Virgin and SR59 in Hurricane, crossing County unincorporated. An environmental analysis to improve and pave this route is currently in progress. Sheep Bridge is expected to become an important connection between SR9 and SR59 as a closure to oversize vehicles is expected in Zion National Park. As of 2026 such vehicles will no longer be able to travel through ZNP but will have to drive around. Current recreational use along the road is high; in addition, the BLM has plans to revise camping opportunities in this area. We expect this to increase use of Sheep Bridge. A separated, paved path will contribute to safe travel on this corridor and provide connection for future path along SR59 to connect the communities of Apple Valley, Hildale and Kanab. Sufficient and safe crossings of current trail use along Sheep Bridge would also be included.